



Beaufort County Public Works Stormwater Infrastructure Project Summary

Project Summary: Seabrook Road Outfall

Activity: Routine/Preventive Maintenance

Narrative Description of Project:

Repaired washout.

Completion: Oct-13

2014-543 / Seabrook Road Outfall	Labor Hours	Labor Cost	Equipment Cost	Material Cost	Contractor Cost	Indirect Labor	Total Cost
AUDIT / Audit Project	0.5	\$10.23	\$0.00	\$0.00	\$0.00	\$6.62	\$16.85
HAUL / Hauling	3.0	\$63.63	\$32.10	\$12.94	\$0.00	\$43.26	\$151.93
RPWO / Repaired Washout	4.0	\$89.40	\$25.52	\$10.29	\$0.00	\$59.82	\$185.03
2014-543 / Seabrook Road Outfall Sub Total	7.5	\$163.26	\$57.62	\$23.23	\$0.00	\$109.70	\$353.81
Grand Total	7.5	\$163.26	\$57.62	\$23.23	\$0.00	\$109.70	\$353.81

Before



After



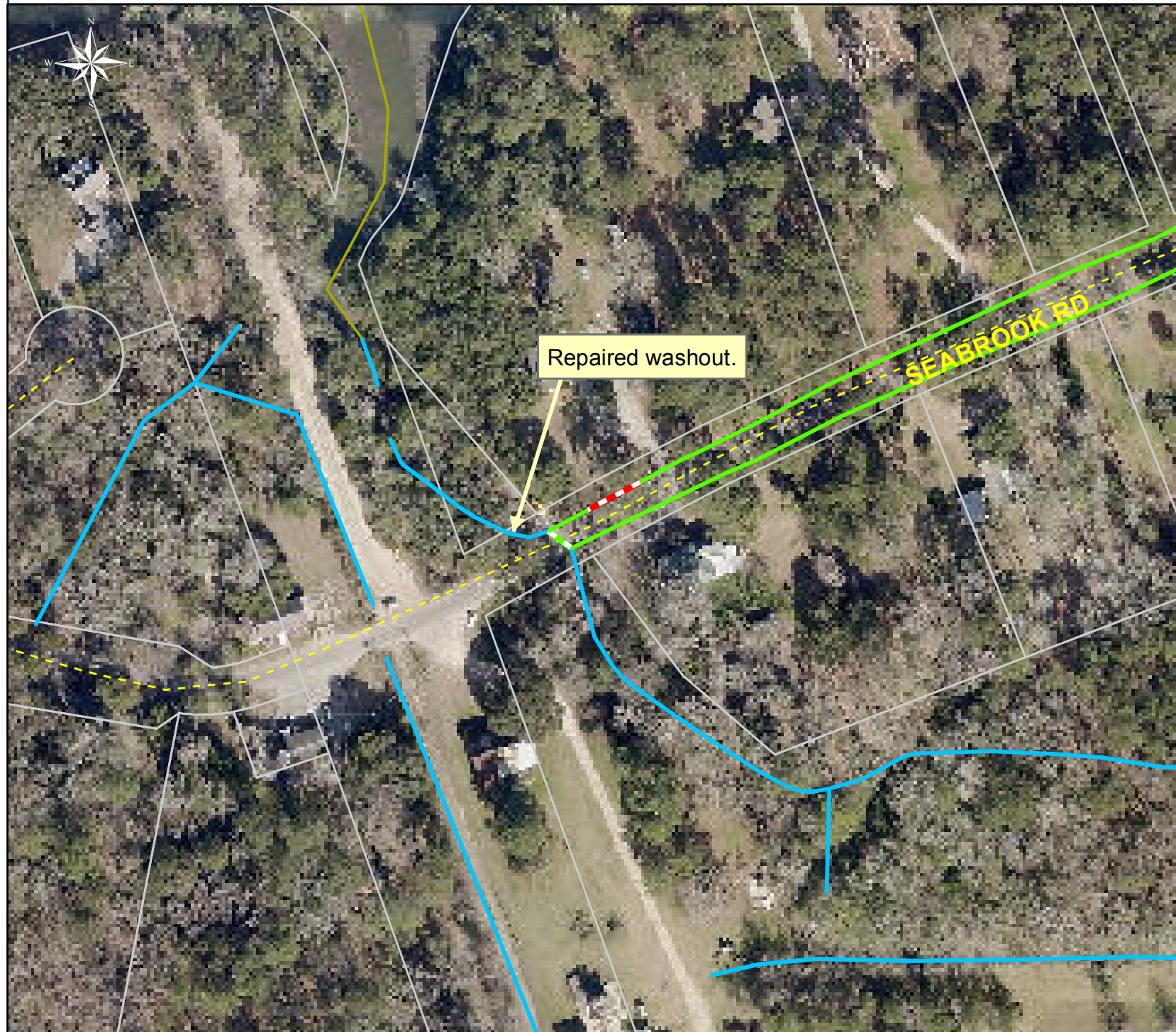
Project: Seabrook Road Outfall

**Activity: Routine/
Preventive
Maintenance**

**Project #:
2014-543**

**Township: Port
Royal Island**

**Completed:
September 2013**



Legend

TYPE

- River
- Creek/Stream
- River/Creek/Marsh BANK
- Channel (fka Outfall)
- Channel Pipe
- Lateral
- Lateral Pipe
- Roadside
- Roadside Pipe
- Road Pipe
- Crossline Pipe
- Driveway Pipe
- Access Pipe
- Bleeder Pipe

0 35 70 140 210 280
Feet

1 inch = 140 feet

Prepared By: BC Stormwater Management Utility
Date Print: 10/16/13
File: C:/sethdata/projects/projectmaps/Seabrook Rd OF 2014-543